

MPB GT

FEATURES

- Constant current circuit for steady lumen output along the strip.
- Slim and low profiles for elaborate space.
- Splendid consistency in beam spread and dust protection with UV stabilized opaque or light opaque cover
- IP Rate IP40
- Maximized evenness of CCT and brightness by professional bin management.
- Wide range of CCT options (2700K ~ 7000K), Dual white
- HCRI 95 option / HCRI 97 (with R9>85) option in wider spectrum
- A short increment for precise fitting
- Angled beam direction designed for show case or cabinet.
- Extended light output by a twin emission
- Bespoke option for CCT, CRI, Watt

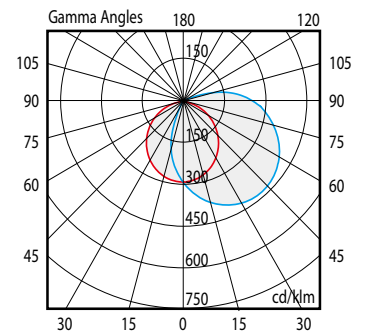
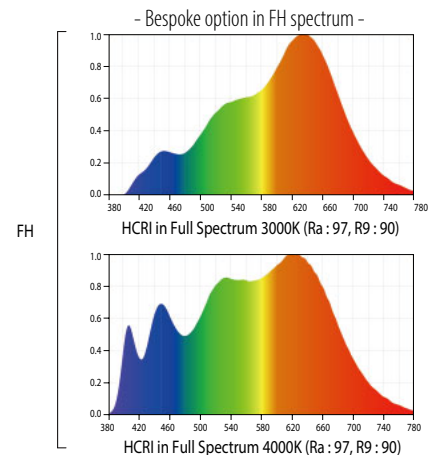


PRODUCT DESCRIPTION CODES / SPECIFICATIONS

A- 27H-1C0-24-50-4- GTSC2M



- 1 NAME** ACROSENTEC
- 2 CCT**
 - Normal White Warm White Beam Angle
 -
 - CRI typ 97, 95
 - Normal White Warm White Beam Angle
 -
 - CRI typ 85
- 3 Level of CRI** FH : CRI typ 97, H : CRI typ 95, Blank : CRI typ 85
- 4 LED pitch (inch/mm)** Refer to the Dimension
- 5 Input VOLT(DC)** 24 V
- 6 Length of add-on (inch/mm)** Refer to the table
- 7 Quantity of add-on** Variable
- 8 Product model** MPB GT
- 9 Feed receptacle** S : Single end LW, B : Both ends LW,
IM4, IMF4
- 10 IP Rate** C2 : IP40
- 11 Diffuser type** M : Opaque, MS : Light opaque, Blank : Clear
 - Dimming PWM, DALI, 0-10, DMX
 - Beam Angle 110°
 - Operation Temp(°F/°C) Ta : -13~122 / -25~50
 - Expected Life Hours 60000 Hrs
 - Mounting Accessory Bracket (R), Magnet (MG), Tape (DS)

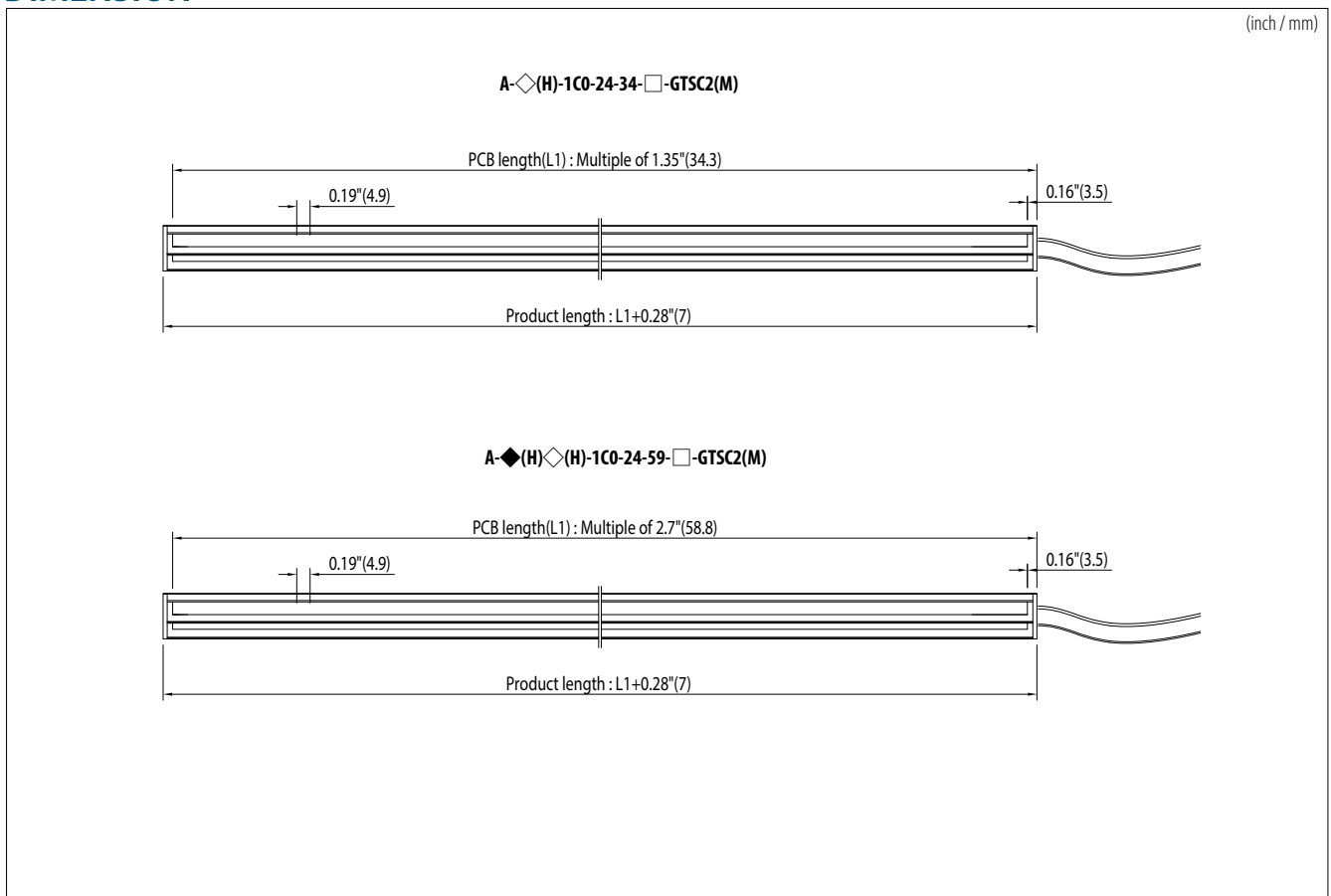


acrosentec

MPB GT		A-◇(H)-1C0-24-34-□-GTSC2(M)	A-◆(H)◇(H)-1C0-24-59-□-GTSC2(M)	A-◇(H)-1C0-24-50-□-GTSC2(M)	A-◇(H)-1C1-24-90-□-GTSC2(M)	A-◇FH-1C0-24-70-□-GTSC2(M)	
CCT (CRI Option)	Normal White	6500K(95, 85), 5600K(95, 85), 4000K(95, 85)				6500K(97), 5600K(97), 4000K(97)	
	Warm White	3500K(95, 85), 3000K(95, 85), 2700K(95, 85)				3500K(97), 3000K(97), 2700K(97)	
Lumen / Meter (CRI typ 85)	6500K, 5600K	2740	1174	2174	2174	-	
	4000K, 3500K	2648	1135	2101	2101	-	
	3000K	2546	1091	2020	2020	-	
	2700K	2513	1077	1994	1994	-	
Lumen / Meter (CRI typ 95)	6500K, 5600K	2204	944	1749	1749	1539	
	4000K, 3500K	2129	912	1689	1689	1486	
	3000K	2048	878	1625	1625	1430	
	2700K	2019	865	1602	1602	1410	
Power Consumption (Watt) 3' 3.4", 1Meter		27.0			25.0		
Power Feed direction		END / REAR					
Temp(°F / °C)	Tc	140 / 60			135 / 57		
Color of Fixture		Fixture : Silver, Matt black, Diffuser : Opaque, Light opaque					
Net Wt (lb/g) / 3' 3.4", 1Meter		1.04 / 470					
Feed Accessory		IMF4 / LW					
Max PCB length of a single product (ft/mm)		7' 2.4" / 2196	7' 1.7" / 2176	7' 2.6" / 2200	7' 1.0" / 2160	7' 1.4" / 2170	
Max Serial run of PCB (ft/mm)		11' 8.7" / 3574	11' 9.2" / 3589	12' 7.6" / 3850	12' 8.4" / 3870	12' 7.2" / 3840	
Ⓢ Add on PCB Length Option (inch/mm)		1.35" / 34.3	2.31" / 58.8	1.97" / 50	3.54" / 90	2.7" / 70	
Total Product Length (inch/mm)		PCB length + 0.28" / 7 or 0.47" / 12					

* Lumen value is based on clear cover. Data is subject to change without notice for improvement

DIMENSION

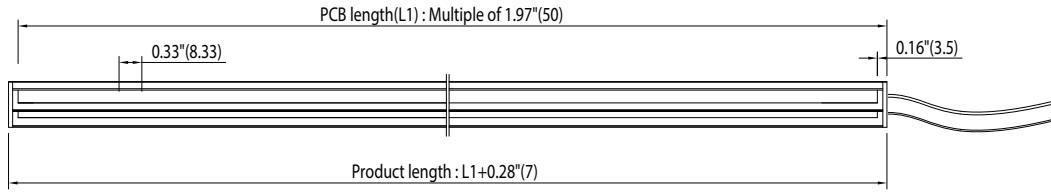


* Lumen value is based on clear cover. Data is subject to change without notice for improvement

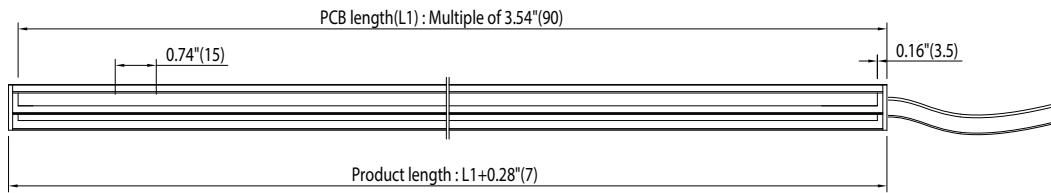
DIMENSION

(inch / mm)

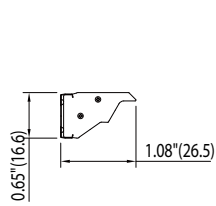
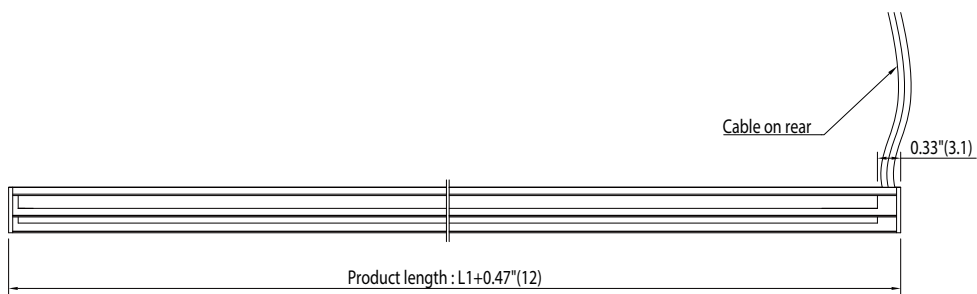
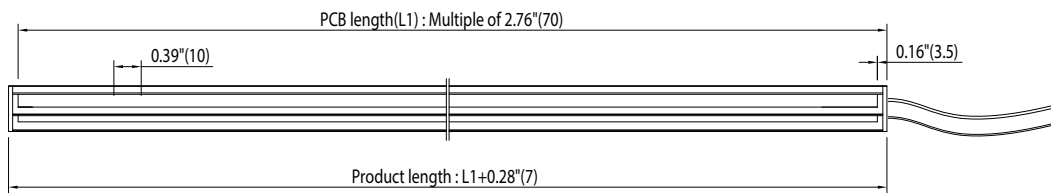
A-◇(H)-1C0-24-50-□-GTSC2(M)



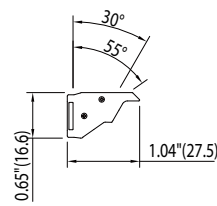
A-◇(H)-1C1-24-90-□-GTSC2(M)



A-◇FH-1C0-24-70-□-GTSC2(M)



On R bracket



On Magnet

* Data is subject to change without notice for improvement