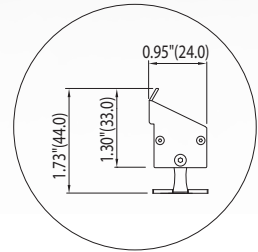
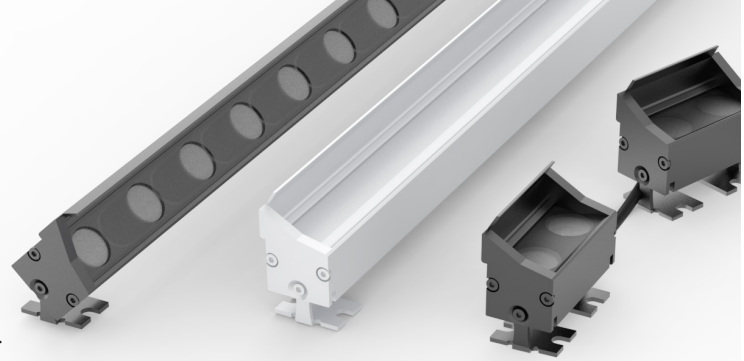


# QPB A MICRO

## FEATURES

- Constant current circuit for steady lumen output along the fixture.
- Miniature fixture suitable in a limited space with a maximum wall wash effect. IP40
- High evenness of light beam spread with 15°x50°, 100°.
- Glare shade built in. Unique 160° swiveling brackets
- High CRI Option(FH type, 98 typ)
- A selection of spectrum designed for Human circadian rhythm (HC)
- Maximized evenness of CCT and brightness by professional bin management.
- Wide range of CCT options (2000K ~ 7000K as Bespoke option).
- Bespoke option for CCT, CRI, Watt and more.



## ORDER CODE

|   |       |      |    |     |    |             |          |     |    |   |  |              |
|---|-------|------|----|-----|----|-------------|----------|-----|----|---|--|--------------|
| A | 35 H  | 1HC3 | 24 | 180 | 4  | 2' 5 1/16"  | QAM 1550 | QMF | C2 | B |  |              |
| A | 2765H | 1HC3 | 24 | 180 | 3  | 1' 9 31/32" | QAM 1550 | B   | C2 | N |  | BROZE FINISH |
| A | 35 H  | 1C0  | 24 | 30  | 23 | (M)708      | QAM 100  | QM4 | C2 | W |  | WR15         |

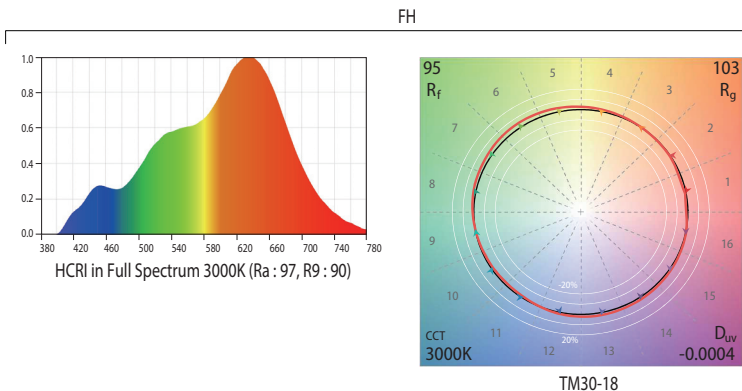
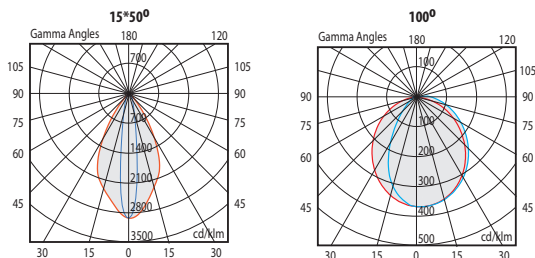
  

| 1           | 2  | 3                        | 4                        | 5           | 6                  | 7          | 8  | 9                        | 10                 | 11                                | 12              | 13   | 14  |
|-------------|--|--------------------------|--------------------------|-------------|--------------------|------------|--|--------------------------|--------------------|-----------------------------------|-----------------|--|---|
| ACROSENTECH | CCT, COLOR                                   | CRI                      | CHIP TYPE (FACTORY CODE) | INPUT VOLT  | INCREMENT (mm)     | MULTIPLIER | FIXTURE LENGTH   | PRODUCT NAME             | BEAM ANGLE         | TYPE OF FEED ON FIXTURE           | IP RATE         | FIXTURE FINISH   | BESPOKE NOTE  |
| A           | 27 30 42<br>33 45<br>35 50<br>37 56<br>40 65 | (BLANK)<br>H<br>FH<br>HC | *                        | 24<br>DC24V | *<br>180mm<br>30mm | *          | ( ) *<br>(M) *<br>BLANK : US unit<br>(M) * : Metric unit | QAM<br>QAM : QPB A MICRO | *<br>See the table | S<br>B<br>QM<br>QMF<br>QM4<br>QM4 | C2<br>C2 : IP40 | N<br>B<br>N : NORMAL ANODIZED<br>B : BLACK ANODIZED<br>W : WHITE POWDER COATED | *<br>WR 15<br>WR 30<br>* - OTHER BESPOKE NOTE<br>WR 15 : Watt reduction by 15%<br>WR 30 : Watt reduction by 30% |

ORDER CODE EXAMPLES

## SPECIFICATION

- **Input, Watt** ..... DC24V, 20W/3' 3.4" (1Meter)
- **Dimming** ..... 0-10, DMX, BT, WIFI (with separate control device)
- **Beam Angle** ..... 15°x55°, 100°
- **Operation Temp(°F/°C)** ..... Ta : -13~122 / -25~50
- **Expected Life Hours** ..... 60000 Hrs
- **Mounting Accessory** ..... Bracket (QP, built-in)



acrosentec

| QPB A MICRO  |  | A-◇(H)-1HC3-24-180-□<br>-*QAM1550*C2* |                                  | A-2765(H)-1HC3-24-180-□<br>-*QAM1550C2* |                                  | A-◇(H)-1C0-24-30-□<br>-*QAM100*C2* |                                  | A-2765(H)-1C0-24-30-□<br>-*QAM100C2* |             |
|--|--|---------------------------------------|----------------------------------|---|----------------------------------|------------------------------------|----------------------------------|--------------------------------------|-------------|
| DRAWING ID (See the dimension)   |  | A                                     |                                  | B                                       |                                  | C                                  |                                  | D                                    |             |
| Lumen / Ft   Meter<br>(CRI typ 85)   | 6500K, 5600K   | 671                                   | 2200                             | 335 / CCT                               | 1100 / CCT                       | 581                                | -                                | 291 / CCT                            | -A954 / CCT |
|  | 4000K, 3500K   | 646                                   | 2120                             | -                                       | -                                | 562                                | 1842                             | 281 / CCT                            | -921 / CCT  |
|  | 3000K  | 573                                   | 1880                             | -                                       | -                                | 540                                | 1772                             | -                                    | -           |
|  | 2700K  | 561                                   | 1840                             | 280 / CCT                               | 920 / CCT                        | 533                                | 1749                             | 266 / CCT                            | -874 / CCT  |
|  | 2450K  | -                                     | -                                | -                                       | -                                | -                                  | -                                | -                                    | -           |
|  | 2200K  | -                                     | -                                | -                                       | -                                | -                                  | -                                | -                                    | -           |
|  | 2000K  | -                                     | -                                | -                                       | -                                | -                                  | -                                | -                                    | -           |
| Lumen / Ft   Meter<br>(CRI typ 95,<br>CRI typ 98 -FH type)                                     | 6500K, 5600K   | 555                                   | 1820                             | 277 / CCT                               | 910 / CCT                        | 468                                | 1534                             | 234 / CCT                            | 767 / CCT   |
|  | 4000K, 3500K   | 518                                   | 1700                             | -                                       | -                                | 452                                | 1482                             | 226 / CCT                            | 741 / CCT   |
|  | 3000K  | 451                                   | 1480                             | -                                       | -                                | 435                                | 1426                             | -                                    | -           |
|  | 2700K  | 433                                   | 1420                             | 216 / CCT                               | 710 / CCT                        | 429                                | 1406                             | 214 / CCT                            | 703 / CCT   |
| Power Consumption (Watt) / Ft   MTR  | 6.1  | 20                                    | 3.1 / CCT                        | 10.0 / CCT                              | 6.1                              | 20                                 | 3.1 / CCT                        | 10.0 / CCT                           |             |
| <b>5</b> Input Volt(DC)  | 24V  |                                       |                                  |   |                                  |                                    |                                  |                                      |             |
| Max PCB length of a single product (ft/mm)<br><b>6</b> PCB increment x <b>7</b> Max Multiplier | 4' 2 5/16" / 1278<br>(180mm x 7)   |                                       | 4' 2 5/16" / 1278<br>(180mm x 7) |   | 4' 2 5/16" / 1278<br>(180mm x 7) |                                    | 4' 2 5/16" / 1278<br>(180mm x 7) |                                      |             |
| Max Serial run of products (ft/mm)   | 13' 9 53/64" / 4212  |                                       | 13' 9 53/64" / 4212              |   | 13' 9 53/64" / 4212              |                                    | 13' 9 53/64" / 4212              |                                      |             |
| <b>8</b> Total Product Length  | 180 x (1 to 7) +18mm   |                                       | 180 x (1 to 7) +18mm             |   | 30 x (6 to 42) +18mm             |                                    | 30 x (6 to 42) +18mm             |                                      |             |
| <b>10</b> Beam Angle   | 15°50°   |                                       | 15°50°                           |   | 100°                             |                                    | 100°                             |                                      |             |
| Feed Accessory   | <b>11</b> TYPE OF FEED ON FIXTURE : QM, QMF, QM4, QMF4 , Extension ( E-QF, E-QMF, E-QF4, E-QMF4) |                                       |                                  |   |                                  |                                    |                                  |                                      |             |
| <b>13</b> Fixture Finish   | FIXTURE (Main body) : ANODIZED, BLACK, WHITE, BRACKET : METALIC                                  |                                       |                                  |   |                                  |                                    |                                  |                                      |             |
| Power Feed Position  | FLOOR  |                                       |                                  |   |                                  |                                    |                                  |                                      |             |
| Temp(°F / °C)  | Tc<br>140 / 60   |                                       |                                  |   |                                  |                                    |                                  |                                      |             |
| Net Wt / Ft(lb)   MTR(Kg)  | 0.60lbs/Ft   | 0.9Kg/ MTR                            | 0.60lbs/Ft                       | 0.9Kg/ MTR                              | 0.60lbs/Ft                       | 0.9Kg/ MTR                         | 0.60lbs/Ft                       | 0.9Kg/ MTR                           |             |

\* Data is subject to change without notice for improvement

## DIMENSION

**A-◇(H)-1HC3-24-180-□-\*QAM1550\***, **A-◇◇(H)-1HC3-24-180-□-\*QAM1550\*** (inch / mm)

**A-◇(H)-1C0-24-30-□-\*QAM100\***, **A-◇◇(H)-1C0-24-30-□-\*QAM100\***

**A** Product length (180mm x (1 to 5) +18mm) : 5 lengths are available  
7 51/64", 1' 2 7/8", 1' 9 31/32", 2' 5 1/16", 3' 9/64"

**B** Product length (30mm x (6 to 60) +42mm) : 60 lengths are available

**QP Bracket fastening**

**11 Type of Feed on the fixture / Feed position**

\* Data is subject to change without notice for improvement